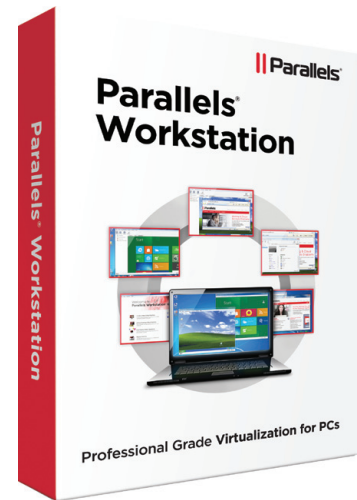


Parallels® Workstation 6

Parallels Workstation lets you run multiple OS configurations at the same time on Windows and Linux PCs. Professional grade capabilities simplify the way you work across environments, automate routine tasks and enable you to enjoy the flexibility to access and manage locally, remotely or through an iPad or iPhone.



Professional Grade

Run a wide variety of OS versions and configurations on a single PC with the power and performance you need with broad host OS support tested and certified on a wide variety of Windows editions and Linux distributions. Enforce good neighbor policies with pre-determined CPU and RAM allocations for the host OS and the VMs while having the ability to isolate virtual machines from the host to create private sandboxes for advanced testing scenarios.

Simplify everyday routines

Simplify the way you work between virtual machines as well as the host OS letting you focus on your job, not on your virtualization software. Brilliantly handle USB devices both new and known by automatically connecting them to the right environment. Easily configure networking profiles to simplify moving between locations. Enable the movement of information between virtual machines and the host computer with simple actions like drag and drop and copy and paste. Automate routine administration tasks to reduce the configuration burden and simplify mobility.

Flexible Management On The Go

Enjoy the flexibility to manage and interact with virtual machines the way you want including: locally, remotely or through a mobile device. Remotely start, stop & reset virtual machines and access VMs and their applications from iPads and iPhones with Parallels Mobile. Convert existing environments into VMs with Parallels Transporter. And improve security by automatically encrypting VMs for privacy and security.

Top Features Include:

Tested and certified on a wide variety of Windows editions and Linux distributions to support your efforts across multiple environments.

- VM configuration capabilities for CPU and RAM allocations on a per VM basis to help enforce good neighbor policies.
- Configurable VM isolation for advanced testing scenarios.
- Adaptive hypervisor improves performance for active window applying the computers power where you need it most.

System Requirements

Hardware Requirements:

- Minimum 1.66 GHz x86 (32-bit) or x64 (64-bit) CPU.
- At least 2 GB of RAM (4 GB recommended to run Windows 7).
- At least 350 MB of space available on the boot volume for Parallels Workstation installation.
- 15 GB of available disk space for each virtual machine. Point and click migration of virtual machines between physical computers improves disaster recovery capabilities and improves capacity planning capabilities.
- DVD-ROM drive.
- Ethernet network adapter.

Note: To run 64-bit guest operating systems, you need a processor that supports the Intel VT-x or AMD-V hardware virtualization technology.

- Fast virtual machines with Intel VT-x2 support (VPIDs, EPT & Flexpriority) taking advantage of the latest hardware improvements.
- Plug and play support for a wide range of USB 1.1 and 2.0 devices.
- USB smart connections remember assignments or default to your desired configuration eliminating reconfiguration.
- Easy virtual networking to enable moving between offices, networks and more.
- Drag and drop, copy and paste, share files between Virtual Machines as well as the host OS to simplify the movement of data.
- Coherence simplifies interaction by integrating application from multiple VMs onto the host desktop for easy access.
- Configure undo-disks to automatically reset VMs to their original starting state enabling rapid testing scenarios and share computer support for labs and classrooms.
- Remotely start, stop & reset virtual machines without physically sitting at the computer extending administrators management reach.
- Access VMs and their applications from iPads and iPhones with Parallels Mobile allowing you to take your workstation with you, virtually.
- Easily convert physical environments into virtual machines with the Parallels Transporter application.
- Automatically encrypt virtual machines to improve privacy and security.

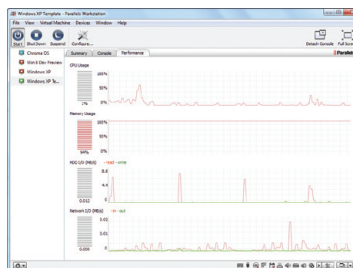
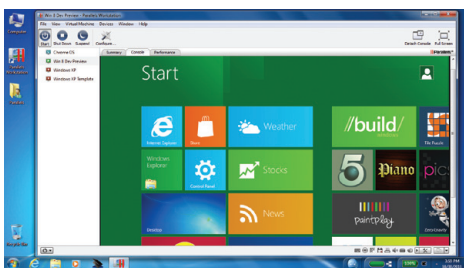
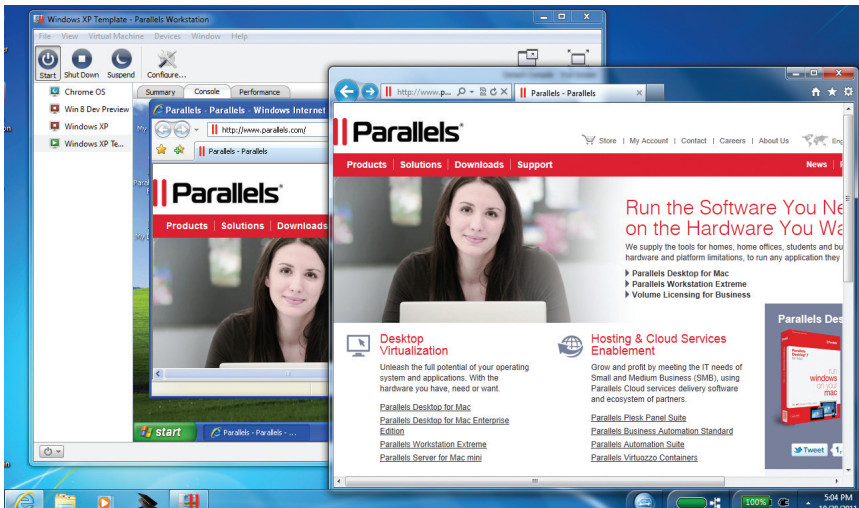
Supported Host OS Software

32-bit:

- Windows 7
- Windows Vista SP1, SP2
- Windows XP Pro SP3
- Windows XP Home SP3
- Debian 6.0
- Fedora 14, 15
- RHEL 6, 6.1
- SLED 11 SP1
- Ubuntu 10.10, 11.04

64-bit:

- Windows 7
- Windows Vista SP1, SP2
- Windows XP Pro SP2
- Debian 6.0
- Fedora 14, 15
- RHEL 6, 6.1
- SLED 11 SP1
- Ubuntu 10.10, 11.04



Copyright© 2011 Parallels Holdings Ltd. All rights reserved. Parallels is a registered trademark of Parallels Holdings Ltd. in the US and other countries. Windows and Microsoft are registered trademarks of Microsoft Corporation. Mac is a registered trademark of Apple Computers, Inc. All others are trademarks or registered trademarks of their respective owners in the US and/or other countries.