

Parallels® Plesk Sitebuilder

Datasheet

Parallels Plesk Sitebuilder is a browser-based website creation and editing application that provides class-leading ease of use and value.

5 Easy Steps From the Web

Parallels Plesk Sitebuilder is an application designed to create and edit website for hosting providers, resellers and end users. Built with hosting in mind, Parallels Plesk Sitebuilder allows providers to easily offer site building capabilities to their customers. The easy 5 Step wizard interface provides an effortless way for customers to create, modify and update their own websites without any technical skills or HTML know-how.

The Parallels Plesk Sitebuilder application for Linux/Unix or Windows also comes with a comprehensive administrative panel that allows providers to quickly and easily tailor the application to their needs.

Parallels Plesk Sitebuilder can be installed either as a stand-alone system with the ability to publish to any server or group of servers via FTP or as a Plesk-integrated add-on with the ability for Parallels Plesk Panel domain owners to access Parallels Plesk Sitebuilder to design, build and publish sites from within the Parallels Plesk Panel interface.

Parallels Plesk Sitebuilder Advantages

Easy-to-Use Web Interface – 5 step point and click wizard that includes design, page structure, content editor, and more

Advanced Templates and Powerful WYSIWYG Editor – Numerous high quality templates, WYSIWYG editor and more

Designed for Differentiation – Ability to select customizable skins to change Parallels Plesk Sitebuilder's design

Open Architecture – Ability to create and modify templates, skins, page sets, languages packs and more

Professional Support – High quality Parallels technical support along with regular updates come standard

Quickly Create and Publish Websites in Five Simple Steps

Parallels Plesk Sitebuilder includes an easy to use five-step wizard.

Start

First, end users can select the type of the site they would like to create.

Design

In the next step, end users can select from hundreds of quality templates using the new and improved template selection interface. Plus, you can customize the site design by selecting colors, headers, and logos.

Pages

Next, end users can define the site structure and select various page sets. There are drag and drop capabilities for modules and pages so users can define their site hierarchy.

Edit

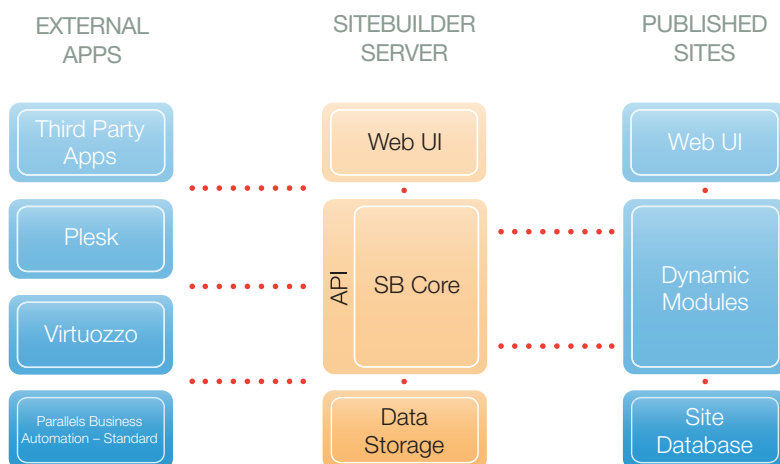
During the edit step, end users can create content using the newly improved WYSIWYG editor. In addition, end users have the capability to drag and drop modules into the page content directly.

Publish

Finally, end users can instantaneously publish their site to a target location using admin-specified or custom FTP settings.

Flexible Modules

Newly improved modules make Parallels Plesk Sitebuilder even more powerful and flexible. The modules included are: Blog, Image Gallery, Guestbook, eShop, SitePal, Forum, Feedback, Registration, RSS Reader, Voting, Script, Area Map, File Download, SiteMap, External Page, and Flash Intro.



Creating Web Pages Has Never Been Easier

The Plesk Sitebuilder application is a powerful tool that enables service providers to attract, upsell and retain customers. The software is not only easy to use but offers hosting providers an effortless way to increase revenue. Plesk Sitebuilder is a business tool for both small and large hosting providers alike.

Benefits

Parallels Plesk Sitebuilder offers many benefits for both hosting providers and their customers. The software is not only easy to use but offers hosting providers an effortless way to increase revenue. Parallels Plesk Sitebuilder is the ideal tool for converting your site traffic into a new customer base.

For Hosting Providers

- **Attract and Retain More Customers** – Parallels Plesk Sitebuilder's intuitive step by step wizard allows service providers to generate more revenue by attracting a more diverse set of customers.
- **Fast Implementation and Deployment** – Parallels Plesk Sitebuilder is an out of the box tool designed for quick implementation and deployment with minimal effort.
- **Re-brandable to Fit Your Service Offering** – Rebranding Parallels Plesk Sitebuilder is a snap by simply modifying the parameters in the admin interface, eliminating the need for server side coding.
- **Ready for Integration** – Parallels Plesk Sitebuilder can be easily integrated with Parallels products such as Parallels Plesk Panel, Virtuozzo Containers and Parallels Business Automation.
- **Powerful and Intuitive Admin Control Panel** – Hosting providers have the ability to control the settings of their entire Parallels Plesk Sitebuilder offering including system parameters, default components and users.

For End Users

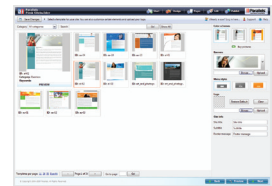
- **Easy to Use Five Step Wizard** – Step by step wizard that allows end users to create the design, structure, edit the content, define parameters and publish a website.
- **Intuitive WYSIWYG Editor** – Allows end users to easily edit website content without any HTML skills or knowledge.
- **Hundreds of Quality Templates** – Parallels Plesk Sitebuilder already includes hundreds of high quality templates and tutorials on how to create and add custom templates and skins.
- **Fully Integrated Web Statistics** – The Web Statistics module makes it possible for end users to create extensive statistical evaluations of the traffic and pages of his/her website.
- **Site Owner Admin Panel** – Enables site owners to administer several websites by providing them with the capabilities to manage site statistics, create new sites, manage existing ones, manage eShop orders and more.
- **Photo Album Capabilities** – Easily set up a complete photo album on the Web with Photo Album Editor as a part of the edit step in the Parallels Plesk Sitebuilder Wizard.

Learn more at www.parallels.com/plesk/sitebuilder

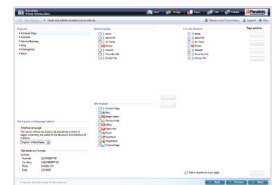
Start



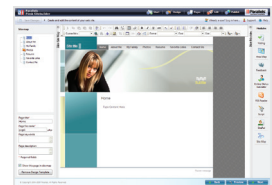
Design



Pages



Edit



Publish



NA
13755 sunrise valley drive
suite 600
Herndon, va 20171 / USA
main +1 703 815 5670
fax +1 703 815 5675
www.parallels.com

EMEA
Rheinstr. 95-97
64295 Darmstadt
Germany
main +49 6151 429 96 0
fax +49 6151 429 96 205
www.parallels.com

APAC
104-0045 / Suite 610
4-1-12 Tsukiji
Chuo-ku / Tokyo / Japan
main +81 (0) 3 3544 6913
fax +81 (0) 3 3544 6914
www.parallels.com