



# Parallels Mac Management for Microsoft SCCM

## Trial-in-a-Box Guide Version 1.2

Copyright© 2018 Parallels International GmbH. All rights reserved. [parallels.com](http://parallels.com)  
This product is protected by United States and international copyright laws. The product's underlying technology, patents, and trademarks are listed at [parallels.com/trademarks](http://parallels.com/trademarks). Microsoft, Windows, Windows Server, Windows NT, Windows Vista, and MS-DOS are registered trademarks of Microsoft Corporation. Apple, Mac, the Mac logo, macOS, iPad, iPhone, iPod touch, FaceTime HD camera, and iSight are trademarks of Apple Inc., registered in the US and other countries. Linux is a registered trademark of Linus Torvalds. All other marks and names mentioned herein may be trademarks of their respective owners.

## Contents

What's Inside.....	2
What You Will Need .....	3
Getting Windows Server 2012R2 .....	3
Assign Unique GUID .....	3
Activate Parallels Mac Management Trial .....	5
Get a Mac computer.....	6
Administrator Guide.....	6
FAQ and Troubleshooting.....	7

## What's Inside

A Hyper-V virtual machine with the following components installed and ready to use:

- Windows Server 2012 R2
- Active Directory, DNS, and DHCP (stopped)
- SCCM current branch 1610, including MS SQL server
- Parallels® Mac Management for Microsoft® SCCM Version 7, installed and preconfigured to work with SCCM

Windows Server 2012 R2 domain is **pmm12.dom**, account is **administrator**, and the password is **1q2w3e!**

## What You Will Need

- A server with Hyper-V installed or a qualifying Windows 10 PC with Hyper-V role enabled
- At least 90 GB of free disk space
- (Optional) At least one additional macOS computer or virtual machine to try out discovery and management features
- Parallels Mac Management trial key (which should be on its way to you as you read this guide)
- Network access to the internet on port 443

## Getting Windows Server 2012R2

1. Download all chunks of the virtual machine image [here](#).
2. Launch any chunk of the image to start decompressing.
3. Create a new Hyper-V virtual machine using the virtual hard disk from the archive you downloaded. Enable network in the Hyper-V virtual machine.

## Assign Unique GUID

You will need to obtain a unique GUID for the Windows Server 2012 R2 virtual machine to be able to register a Parallels Mac Management trial key.

You can generate a unique GUID [here](#).

# Online GUID Generator

Unlimited Free GUIDs for Developers and Testers

How many GUIDs do you want (1-2000):   
Uppcase:  Braces:  Hyphens:

Results:

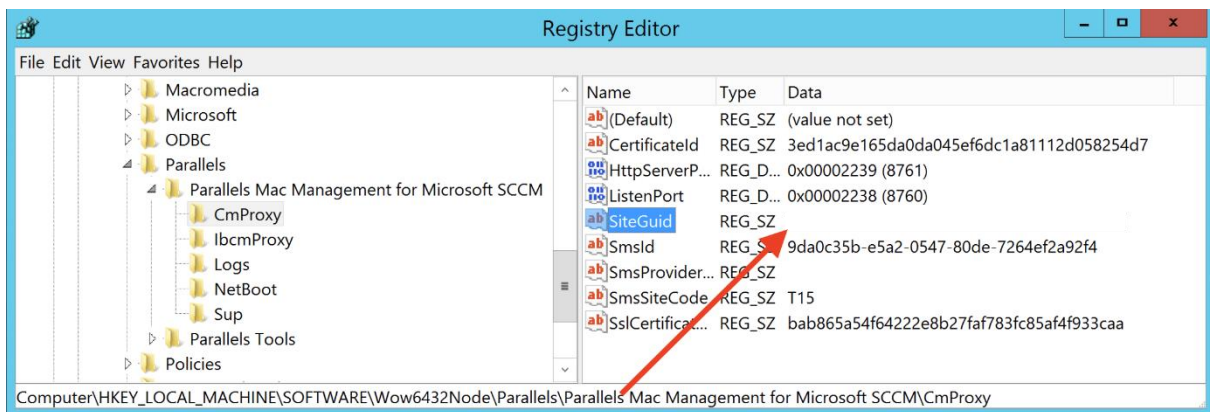
9562EEBF-3B15-4260-A979-FEA4F583959D

Use these GUIDs at your own risk! No guarantee of their uniqueness is given or implied!

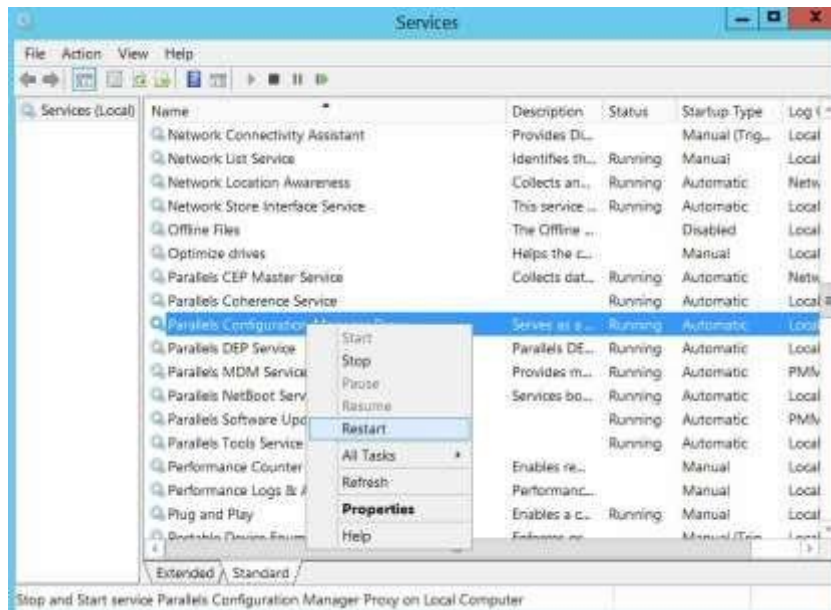
Then launch the Windows registry editor in the virtual machine and navigate to:

*HKEY\_LOCAL\_MACHINE\SOFTWARE\Wow6432Node\Parallels\Parallels Mac Management for Microsoft SCCM\CmProxy*

Look for the SiteGUID string value and paste the generated GUID into the value field. If there is already the SiteGUID string, simply update its value with your new GUID.



Open Services and restart **Parallels Configuration Manager Proxy** service.



## Activate Parallels Mac Management Trial

You should have already received a trial key after you requested this trial-in-a-box. If not, please call +1 425 282-6448 or email [usentsales@parallels.com](mailto:usentsales@parallels.com) to ask for your trial key.

After you receive a key, you will need to register it under your Parallels Business Account to be able to activate the product. Go to <https://my.parallels.com> and sign up, or sign in if you already have an account.



In the account, click "Register Key" and register your license.

Then go to your Windows Server 2012 R2, open SCCM, and click "Administration." Expand Parallels Mac Management, click on "License," and select "Activate" on the right pane.



Copy the license key you registered in the previous step.

## Get a Mac Computer

To be able to try out some Parallels Mac Management features, you will need at least one macOS client machine.

## Administrator Guide

See the Parallels Mac Management for Microsoft SCCM Administrator Guide for information on how you can discover and manage Mac computers:

[parallels.com/products/mac-management/resources/](https://parallels.com/products/mac-management/resources/)

# FAQ and Troubleshooting

- Make sure the DNS server in macOS computer matches the DNS sever of the Server Manager.



- Windows Server 2012 R2 domain is **pmm12.dom**, account is **administrator**, and the password is **1q2w3e!**